

- For safety and ease of mounting, two people working together are recommended.
- Handle carefully to avoid scratches to both the item & the wall during the mounting.

#### HARDWARE ENCLOSED:

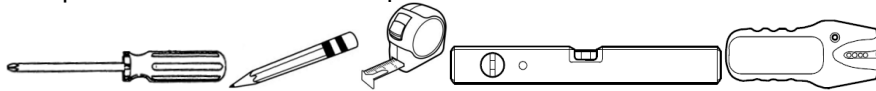
- (A) Drywall Anchor x2  
 (B) Screw x2



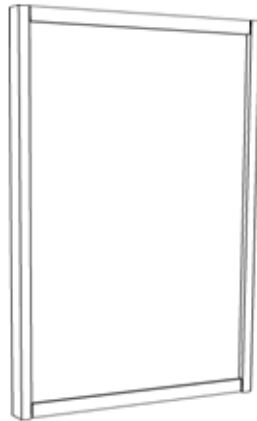
**Note:** The hardware included with this item is meant for drywall or stud mounting only. For other wall types, please consult your local hardware store for assistance in selecting the appropriate hardware.

#### TOOLS REQUIRED:

Phillips Screwdriver / Pencil / Tape Measure / Level / Stud-finder



**CAUTION: DO NOT USE A CABLE TO HANG THIS MIRROR. THE D-RINGS MUST HANG DIRECTLY FROM THE INSTALLED SCREWS!**



**A**

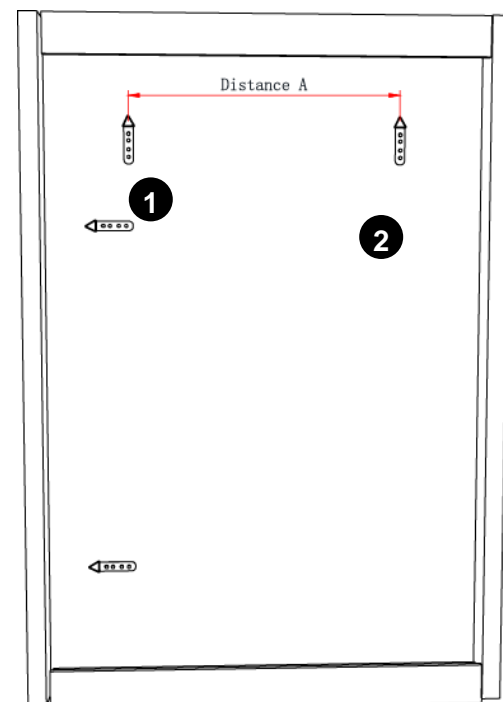


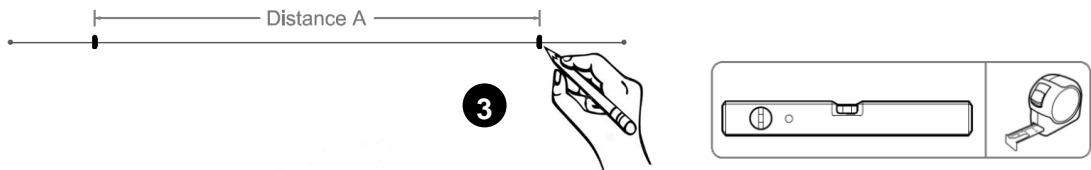
**B**

#### Mounting Steps:

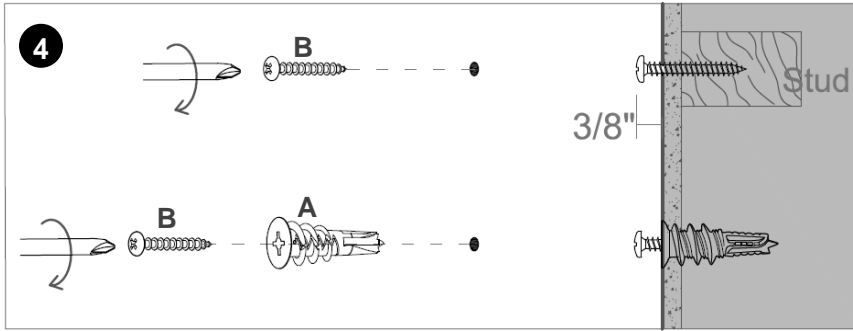
Before you get started, please determine your favorite orientation of the product and then use the appropriate two D-rings for hanging.

1. First, use a tape measure to measure the exact distance between the two D-rings (measure from center to center of each D-ring, as shown). Record this measurement as "Distance A".
2. With the back of the item facing away from the wall, hold the item straightly at a desired mounting location. Use a pencil to mark the wall on each side of the item and in alignment with the two D-rings. Then set the item aside.
3. Connect the two marks of Step (2) with a light pencil line and use a level to ensure the line is level. Make two "insertion marks" centered along this line with a measurement equal to "Distance A".



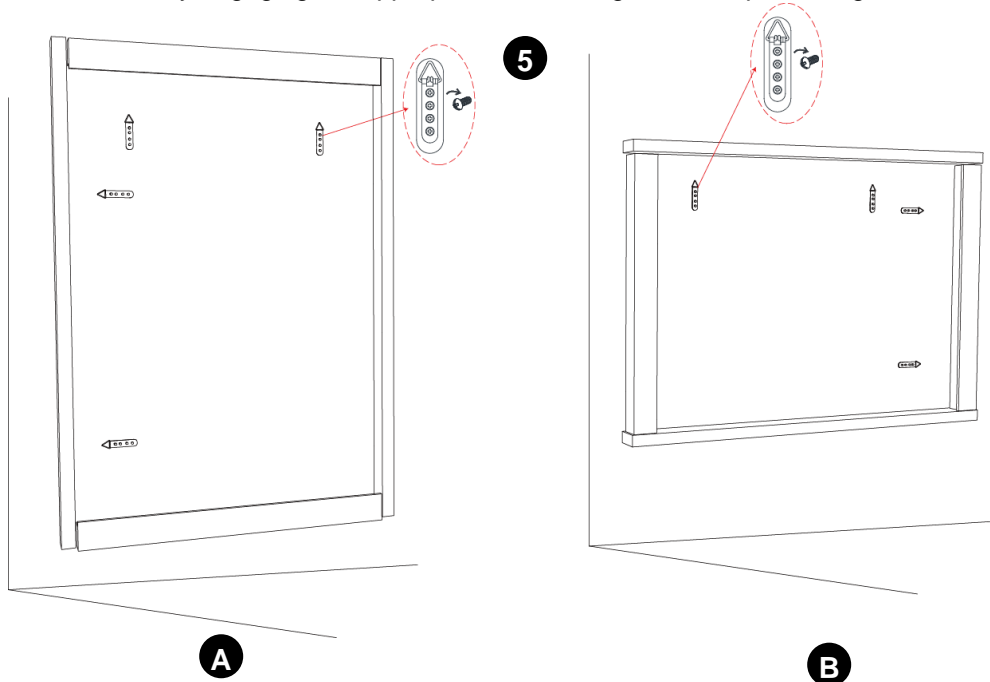


4. Use a stud-finder to determine wall studs and install the proper hardware at each mark.  
**For stud marks:** Use a screwdriver to secure a screw directly into the wall remaining the screw head about 3/8 inch from the wall.  
**For non stud marks:** First install an anchor into the wall and then secure a screw into the anchor. Also, remain the screw head 3/8 inch protruded from the wall.



**How to install the anchor?**  
 Place a Phillips screwdriver into the recess of the anchor and firmly press the anchor into the wall while turning it clockwise until the anchor's head becomes flush with the wall surface.

5. Hang the item on the wall by engaging the appropriate two D-rings with the protruding screw heads.



**CARE INSTRUCTIONS:**

- To clean: wipe with a soft, dry or slight damp cloth.
- Do not use abrasive or strong chemical household cleaners.
- A household glass cleaner may be used for the mirror surface – spray the cleaner on a clean cloth first and then use the cloth to clean the glass.

Thank you for your purchase!  
 Stores | Catalog | [www.westelm.com](http://www.westelm.com)