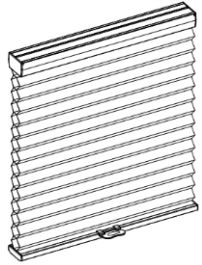


## Installation Instructions

### Honeycomb Shades

#### Cordless



### Getting Started

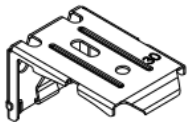
Remove shade from package. Save packaging until shade is installed and working to your satisfaction.

#### Tools:

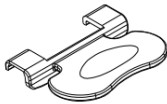
- Level
- Measuring Tape
- Pencil
- Power drill  
(1/4" hex driver and drill bit)
- Screwdriver



### Check Component/Hardware:



Installation Bracket



Handle



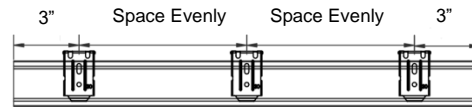
#8 1 1/4" Screws

### Hardware Standard Quantity

Order Width (X)	20" ≤ X ≤ 43"	43" < X ≤ 72"
Installation Bracket	2	3
Handle	1pc	
1 1/4" Screw for Installation Bracket	4	6

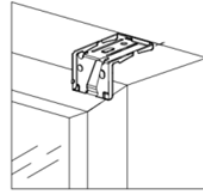
### Step 1: Bracket Installation

• Measure 3" from both ends of the head rail. Mark the bracket location on the mounting surface.



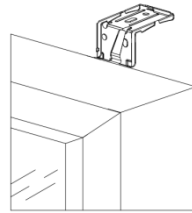
#### Inside Mount

- Align wall to the front of brackets.
- Use two 1 1/4" mounting screws to secure brackets.



#### Outside Mount

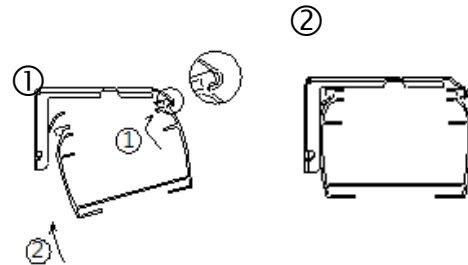
- Align the end of brackets with the top window frame.
- Use two #8 1 1/4" mounting screws to secure brackets.



### Step 2: Shade Installation

• Position head rail at an angle so that it is hooked to the front of the bracket. Then push it upward to snap into the bracket.

**⚠ For proper installation, start with attaching the front rail to the bracket.**

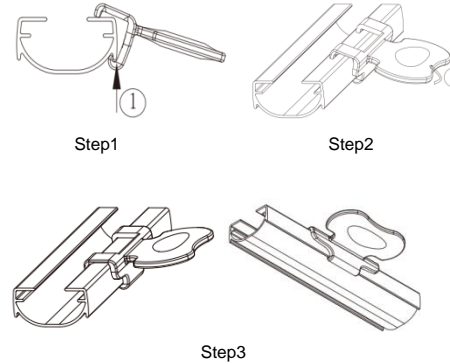


### Step 3: How to Install Shade Handle

Step 1: Position the handle at an angle as shown below so that it is hooked to the rail.

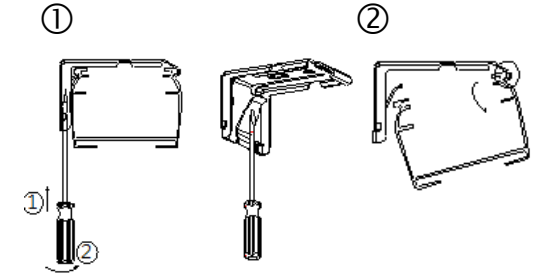
Step 2: Then push it to snap into place, there will be a "Click" sound.

Step 3: Check if handle's upper and lower hooks firmly hook to the rail.



### Remove the Shade

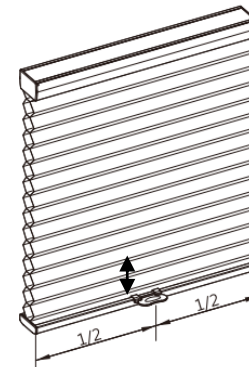
- Fully raise the shade.
- Gently pry the bracket off the head rail with a flat screwdriver as below picture.
- Remove the shade.



### Cleaning the Shade

Routine cleaning will help maintain the beauty of your shade. The shade can be cleaned by using a soft brush, vacuumed with a low suction hand-held vacuum, cleaned ultrasonically (specify that a mild solution must be used and that the head rail should never be immersed in liquid), or dampen a clean cloth with a warm water and mild detergent solution to dab the spot until it's gone (do not rub!).

### Shade Operation



**To lower the shade,** gently pull down the shade on the bottom rail handle and stop at the desired location.

**To raise the shade,** gently raise the shade on the bottom rail handle to desired height.

**⚠ Do not grasp the rail unevenly. Always lower or raise the shade in the middle or use both hands with even pressure to two handles of the rail.**

### Troubleshooting

Problem	Solution
The shade will not snap into the mounting brackets	Check if mounting brackets are aligned. Refer to Step 1.
The shade will not lift	Gently pull down on the bottom rail to reactivate the cordless mechanism. Repeat if necessary.
The shade stack up unevenly	Lower the shade completely, then raise it up to correct it. Repeat if necessary.